

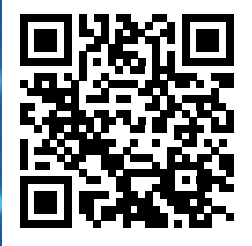
# ACROBAT GT

## Automatic Pool Cleaner

### OPERATING AND TROUBLESHOOTING GUIDE

- 36 fin disc and flexible foot constructed of quality polyurethane
- Proven technology: Diaphragm driven strength & quietness
- Unique hose design for extra spring
- Three year limited warranty on main body
- Adjustable flow valve to control the ACROBAT GT travelling speed
- Easy installation – no tools required
- Suitable for all in-ground pool surfaces in good condition

*We hope you enjoy your ACROBAT GT automatic pool cleaner!*



[www.poolpro.com.au](http://www.poolpro.com.au)

# ACROBAT GT Pool Cleaner



Visit our YouTube Channel to see installation and maintenance videos for your Acrobat GT pool cleaner!

**[www.youtube.com/PoolProAU](http://www.youtube.com/PoolProAU)**

## **CONTENTS:**

**PART A: ASSEMBLING THE ACROBAT GT POOL CLEANER**

**PART B: INSTALLING THE ACROBAT GT POOL CLEANER**

**PART C: INSTALLING OR REPLACING THE DIAPHRAGM**

**PART D: MAINTENANCE**

**PART E: TROUBLESHOOTING**

**PART F: LIST OF INSTALLATION COMPONENTS**

**PART G: WARRANTY**

## **PART A:**

### **ASSEMBLING THE ACROBAT GT POOL CLEANER**

- 1.** Place the inner lip of the disc onto the flexi foot pad flange and peel over until disc is secure between the flange and lip of the flexi foot pad.
- 2.** The fins of the disc and the word "TOP" should face the float arm.
- 3.** Unscrew the threaded hand-nut and slide the bumper ring over the back of the ACROBAT GT's main body.
- 4.** Screw the hand-nut back into place and this will secure the bumper ring in place.
- 5.** Attach the hoses to thick tube of main body at the opposite end to the hand nut, push hose on firmly.

## **PART B:**

### **INSTALLING THE ACROBAT GT POOL CLEANER**

- 1.** Connect ACROBAT GT machine to your hoses, sufficient hose should be installed for the hose to reach the furthest place from the skimmer box plus one length of hose.
- 2.** Gently place machine in water. This will let the unit gradually release air and sink to pool floor.
- 3.** Prime your hose by placing the last section of hose over your return inlet eyeball while your pump is running. This fills the hoses and ACROBAT GT unit with water and allows it to sink.
- 4.** Attach the adjustable control valve to the end hose, with arrow in direction of water flow. Use weir adapter in skimmer plate and attach elbow supplied between adapter and control valve.
- 5.** Attach the free end of the pool hose to the free end of the adjustable valve.  
Switch on the pump and the ACROBAT GT will start to operate.
- 6.** If required, adjust the control valve by opening or closing the flow - the tighter the spring, the more pressure, the looser the spring, the less pressure.

**WARNING! DO NOT DETACH POOL CLEANER WHILE PUMP IS RUNNING**



# ACROBAT GT Pool Cleaner

**TIP:** Backwash and rinse filter and clear skimmer box and pump basket before operating your new ACROBAT GT pool cleaner.

**TIP:** Backwashing and cleaning the skimmer basket or sock and pump basket should be done weekly.

## PART C:

### INSTALLING OR REPLACING THE DIAPHRAGM

No specialised tools are required to install the ACROBAT GT diaphragm.

However should you experience difficulty, please consult your local ACROBAT GT dealer.

*You can visit [www.poolpro.com.au](http://www.poolpro.com.au) to watch a video of this installation.*



#### Step 1:

Place the yellow seal over the end of the diaphragm that has 3 circular ridges on it, and push the yellow ring up against the rim of the diaphragm.



#### Step 2:

Hold the inner extension tube by the threaded end and push the other end through the cleaner body from top to bottom.



#### Step 3:

Holding the diaphragm by the end with the yellow ring affixed, fold the other end of the diaphragm so it fits about 2cm inside the inner extension tube.



#### Step 4:

Push the diaphragm and inner extension tube back through the body of the cleaner, until the end holding the yellow ring fits snugly into the bottom of the cleaner body.

# ACROBAT GT Pool Cleaner

## PART C:

### INSTALLING OR REPLACING THE DIAPHRAGM (CONTINUED)



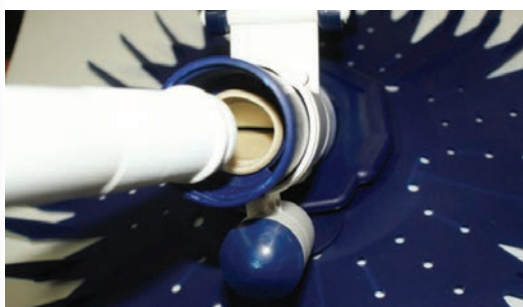
#### Step 5:

Gently pull out the inner extension tube from the top of the cleaner body.



#### Step 6:

The diaphragm should be through the hole in the top of the cleaner body. Use your finger to "pop open" the folded top of the diaphragm.



#### Step 7:

Gently insert the threaded end of the inner extension tube into the exposed top of the diaphragm and twist clockwise until it fits snugly.

Finish by placing bumper ring onto body of cleaner, then fit the large outer extension tube over the inner tube and screw until firmly closed.

# ACROBAT GT Pool Cleaner

## PART D: MAINTENANCE

1. To ensure optimum performance of your ACROBAT GT pool cleaner, keep your skimmer and pump baskets clean.
2. Unclean filters can affect the cleaners operation. Make sure you keep your sand or cartridge filter clean by backwashing regularly.
4. Your pool cleaner will fade in colour over time. This is increased by excessive chemical usage and incorrect Alkalinity and pH levels. When you chlorine shock your pool please remove your ACROBAT GT pool cleaner for at least 4 hours. When adding large amounts of salt to your pool, remove the cleaner and allow the salt to fully dissolve before putting the cleaner back in the pool.
6. Setting the control valve to fast (ie. too much suction) can split the diaphragm. If there is excessive suction, the ACROBAT GT hoses will create a great deal of turbulence.

## WEAR AND TEAR - IMPORTANT

1. Ensure that the ACROBAT GT disc, foot pad, bumper ring and diaphragm are in good condition. If these items get smooth, shiny or tear, the pool cleaner will not work properly. Never remove the ACROBAT GT from the pool by lifting it by the float arm. This can break and is not covered by warranty. Only remove ACROBAT GT by holding onto main upper tube.
2. The bumper ring and possibly the weight chamber will wear as these parts are in contact with the pool walls, step and corners.
3. The diaphragm should be checked regularly to ensure no foreign matter is trapped inside impeding the water flow.
4. The hoses will also rub against the wall, in the normal course of use.
5. Your hoses should be straight and flexible, if they become rigid and bent over time, consider replacement or place them in a straight position in the sun for a few hours.

## PART E: TROUBLESHOOTING

If you have problems operating your ACROBAT GT please refer to the following options:

### ACROBAT GT DOES NOT MOVE OR MOVES SLOWLY

1. Ensure that there is no debris stuck in the diaphragm, or lodged in the hoses between the ACROBAT GT and skimmer plate.
2. Ensure that your pool has been backwashed and rinsed recently.
3. Ensure that your skimmer basket and pump baskets are not full of debris. Ensure skimmer plate has only one hole, for the adapter plug. Ensure skimmer plate seals well and is not cracked.
4. Ensure there are no leaks in the hoses, pump lids or o-rings on pump lids.
5. Ensure that there are no suction leaks between your pump and skimmer box. Suction leaks are characterised by poor suction, bubbles returning via the eyeball return in the wall. If you have any of these symptoms contact a pool maintenance professional.



# ACROBAT GT Pool Cleaner

## ACROBAT GT RUNS THEN STOPS

1. Refer to points under "Does not move or moves slowly"
2. Outer extension tube may be worn out.
3. Filter sand may need to be changed or cleaned. To check this put the filter on "Recirculate" if it works now there is a filter problem.
4. Pump suction may be too strong and cause unit to stick to the floor. To rectify this adjust the flow through the ACROBAT GT by adjusting the control valve so the gate opens more easily to bypass water. Normal setting between 2 and 4.

## ACROBAT GT DOES NOT SINK

1. Ensure there is no trapped air in the hoses or unit.
2. The float is filled with water.
3. The ACROBAT GT has no weight in unit.

## ACROBAT GT FALLS ON ITS SIDE

1. The float is filled with water.
2. The outer extension tube is jammed and won't swivel.

## ACROBAT GT GETS STUCK IN A CERTAIN SPOT

1. Adjust the hose length by adding or removing a hose.
2. Ensure that the eyeball return is not interfering with the flow of the ACROBAT GT.  
If so adjust eyeball return nozzle to direct the flow away from the ACROBAT GT.
3. If the problem persists, try moving the weight along the hose or add another hose weight along the sections of hose and place an eyeball diverter ball in the eyeball nozzle. Note not all pool returns are the same and you may need to use a different eyeball diverter from the one included with the ACROBAT GT.
4. Add 'hose motors' to aid in the manoeuvrability.
5. A larger deflector ring may be required.

## ACROBAT GT DOES NOT CLIMB THE WALL

1. Ensure the skimmer basket is free of any debris.
2. Adjust the control valve to a higher setting.
3. Check the pressure gauge on the filter system – the filter may need to be cleaned/backwashed.

## ACROBAT GT CLIMBS OUT OF THE POOL

1. Ensure the control valve is free of debris and not jammed shut.
2. Set control valve to a lower setting to divert more water.

## ACROBAT GT IS MOVING IN A SET PATTERN

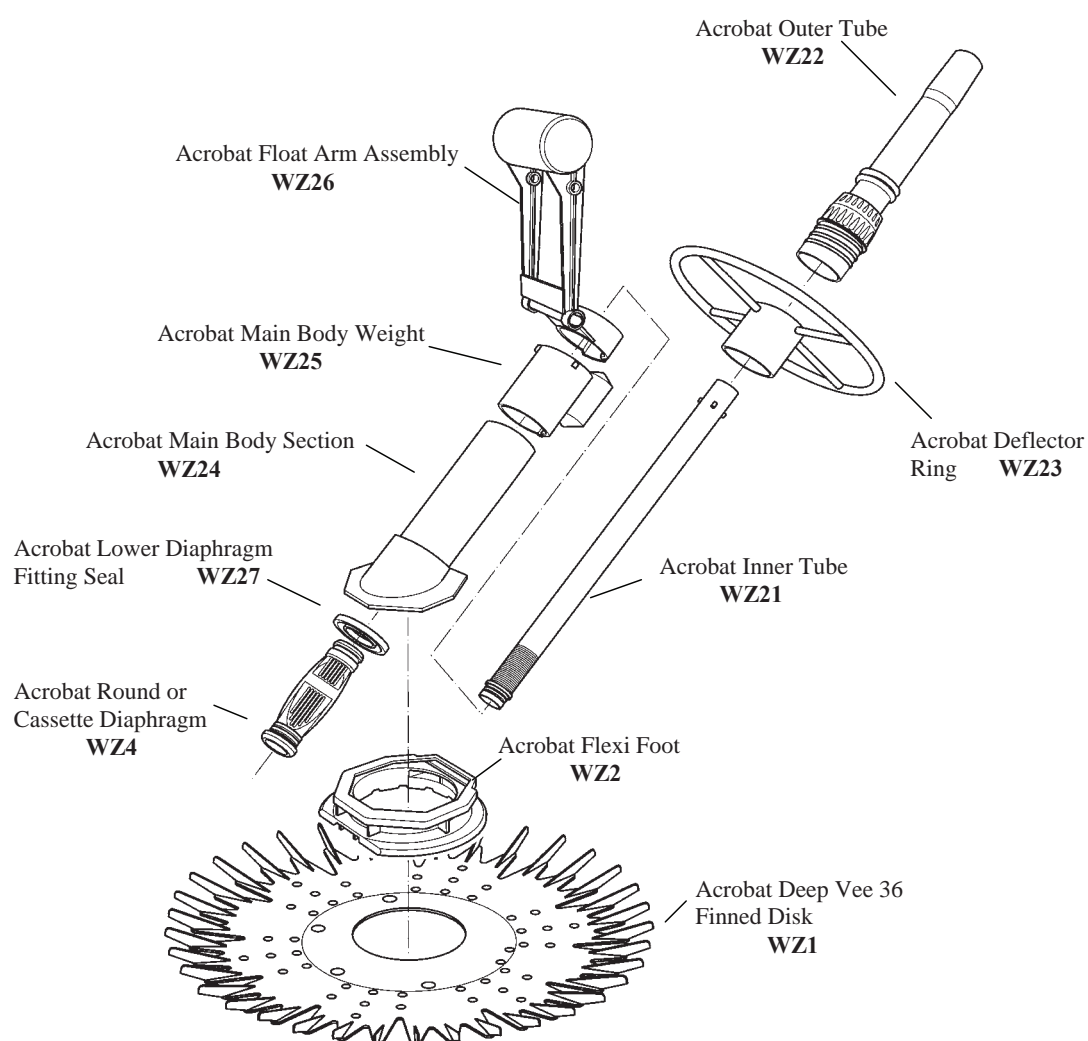
1. Ensure hoses are in a good flexible condition and not coiled.
2. Ensure water flowing through return eyeballs is not being channelled so as to create a current in the pool water that in turn forces the machine into a set operating pattern.

# ACROBAT GT Pool Cleaner

## PART F:

### LIST OF COMPONENTS:

PART NUMBER	DESCRIPTION	PURPOSE
WZ5	Skimmer 45 degree elbow	To assist with fitting of control valve or hose into the weir adapter.
WZ6	Finned weir cuff/adapter	To assist with fitting of hose into a vacuum plate in the skimmer box.
WZ8	T-shaped flow regulator / control valve	Adjusts flow to cleaner, suitable for most types of cleaner.
AMPB1	1m hose x 12	Suitable for most types of cleaners.
WZ29	Hose weight	Prevents coiling hose. Keeps hose balanced.
WZ30	Spring loaded flow valve	Adjusts flow to cleaner, suitable for most types of cleaners.



## PART G:

### WARRANTY

1. Proof of purchase is required prior to making any warranty claim
2. Your ACROBAT GT pool cleaner was carefully checked before shipment. After unpacking your ACROBAT GT, if any part is missing please notify your dealer immediately. Please consult your owner's installation guide for operational and installation queries.
3. The manufacturer warrants the ACROBAT GT main body to be free of any defects in materials and workmanship for a period of 3 years from purchase date of pool cleaner.
4. If the ACROBAT GT has a defective part, please take your pool cleaner and original dated invoice to your local dealer to have it assessed, repaired or exchanged.
5. Hoses are warranted for 12 months against material defect, excluding abrasion, wear and tear and direct sun damage or chemical damage.

### NOTE: CORROSIVE WATER VOIDS WARRANTY

Poor chemical balance can affect the life of the ACROBAT GT, Ensure the pH is maintained at 7.2 - 7.8, water temperature should be between 14°C - 38°C. Total alkalinity should be between 120 - 180, Calcium Hardness should be 200 - 300ppm in non-fibreglass pools and 180 - 250ppm in fibreglass pools. Free Chlorine should be between 2 - 3 ppm. Salt should not exceed a maximum of 6000ppm.

Please email [sales@poolpro.com.au](mailto:sales@poolpro.com.au) or fax to 1800 77 88 20 to register within 7 days of purchase.

This way if you lose your receipt, we have a copy. Make sure you also send your name, address, mobile and home contact numbers and date of purchase. This information is kept only by us and is not sold, leased or otherwise shared with any other party.

### WARRANTY EXCLUDES THE FOLLOWING:

1. Discolouration of ACROBAT GT due to water chemistry or general wear and tear.
2. Damage to ACROBAT GT due to excess chlorine or improper water chemistry balance.
3. Poor chemical balance as well as age can cause pool liners to become abrasive and brittle. These poor surfaces can also be caused by poor supporting structures therefore the owner uses the pool cleaner at their own risk and releases any and all claims for damage where these conditions exist.
4. Abrasion to the hose or damage from improper use, leaving the hoses out of the pool will cause damage and invalidate the warranty. When the hose and ACROBAT GT are out of the pool, store out of direct sunlight.
5. All wearing parts like the disc, foot pad, bumper wheel and swivel float arm must be regularly checked and replaced when worn. They are not covered by the 3 year warranty. However if these item are found to be faulty upon receiving your ACROBAT GT or are damaged in transit please contact the store where you purchased this item.
6. Never lift the ACROBAT GT out of the pool by the deflector ring or float arm. When the ACROBAT GT is full of water the strain of the water volume in the machine will damage these parts. Always remove the ACROBAT GT from the pool holding the main outer tube slightly below where the first hose connects to the main outer tube.

### Note:

Most problems are caused by incorrect installation, poor water chemistry or general wear and tear.

Please regularly check the condition of the flexi foot pad & 36 finned disc. These are like the tyres on a car and need replacement from time to time.

ASSEMBLED BY:

\_\_\_\_\_

**ACROBAT GT Pool Cleaner**  
**[www.poolpro.com.au](http://www.poolpro.com.au)**

